

Zwischenplatten - Rückschlagventile

Ersetzt: 03/97

D 10 212

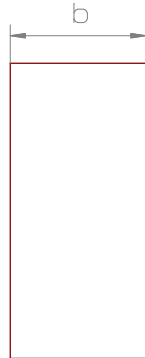
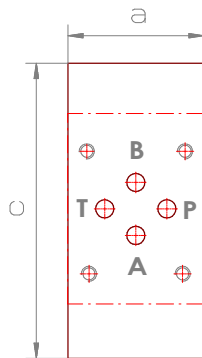
NG 6 - 32

DIN 24340

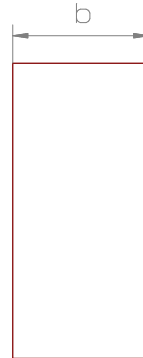
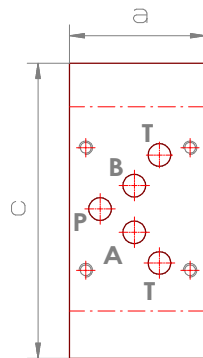
PN bis 400 bar

Druckausgabe:01/19

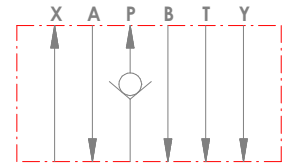
DN 6



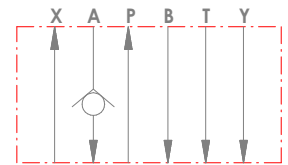
DN 10



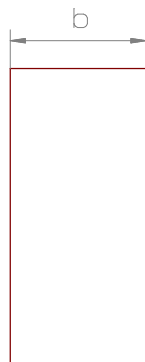
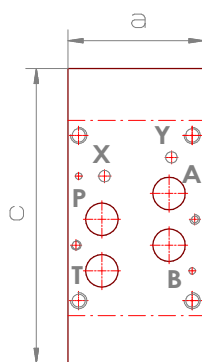
Z S K ... P



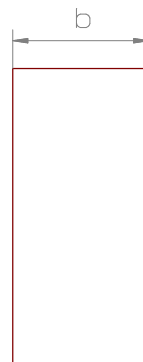
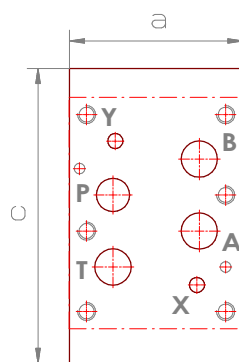
Z S K ... A



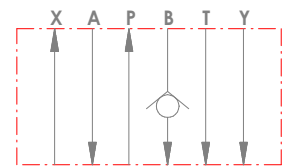
DN 16



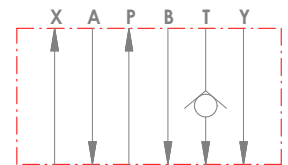
DN 25 / 32



Z S K ... B



Z S K ... T



| Typ | a | b | c |
|--------|-----|------|-----|
| ZSK 6 | 44 | 45 | 106 |
| ZSK 10 | 70 | 50 | 155 |
| ZSK 16 | 90 | 58,5 | 210 |
| ZSK 25 | 115 | 53 | 218 |
| ZSK 32 | 200 | 65 | 265 |

Bestellbeispiel:

ZSK 6 A M 10

Platten - Typ

Nenngröße

A = Ventil in A-Leitung
B = Ventil in B-Leitung
P = Ventil in P-Leitung
T = Ventil in T-Leitung

Serie

Druckmedium:
M = Mineralöl
W = Wasser
S = schwer entflammbare
Flüssigkeiten